



CompuGroup™
Medical

What's New in

CGM webPRACTICE™ v2021.4.0

Final Release Notes

November 10, 2021

CGMwebPRACTICE™
Fully Web-Based Practice Management Suite



Table of Contents

Introduction	3
New Features and Enhancements	4
Summary of Action Required Items.....	4
Summary of Changes to Document.....	4
General	5
Billing	6
Reports	6
Schedule	6
System	7
Tables.....	8
Transactions.....	9

INTRODUCTION

This document provides an overview of new features, resolutions, and enhancements available in the release of CGM webPRACTICE v2021.4.0. Each section defines the specific feature and/or enhancement associated with the new CGM webPRACTICE release, as well as any resolved issues.

NEW FEATURES AND ENHANCEMENTS

This section is not meant to be cumulative and only contains information associated with the CGM webPRACTICE v.2021.4.0 release.

Note: You will need to complete the *****Action Required***** items (where applicable) to make sure your system functions properly with this updated version.

As with all updates, for all new menu functionality, you will need to identify which users you want to have access to the new menu functions. Then, you must activate the new menus using the *Model User Menus* function located on the *System, User Management* menu. You must also set the security level that you want on the new menus using the *Change Function Security* function located on the *System, User Management, Function Security Menu*.

Summary of Action Required Items

Page #	Function	Action
8	Import Fee Schedules	Load the updated files if applicable
8	Load the HCPCS Codes	Load the updated files if applicable
8	Import RVU Unit Values	Load the updated files if applicable
8	Load the ICD-10-CM Codes	Load the updated codes if applicable
7	Payment Entry Integration	Clear the Exclude Negated Items on Pmt Allocation screen when Filtering check box, if you want to see negated items on the Payment Allocation screen.

Summary of Changes to Document

Version 1 of Preliminary Release Notes was released Nov 2, 2021.

Section	Function	JIRA #	Added/Deleted/Revised

General

Logging in to CGM webPRACTICE ***Action Required***

The requirements when creating a Password have been enhanced to provide a higher level of security. Passwords now require a minimum length of eight characters and must contain at least three out of the four following characters:

- Lower Case Letter
- Upper Case Letter
- Number
- Special Character - Example: ! # \$ % & () * + , - . / : ; < > = ? @ ^ _ { | } ~ []

Note: After the update has been installed, you will be required to change your password using these new requirements unless your existing password already meets the new requirements.

Database Number fields

Every **Database Number** field in the system has been increased to allow up to four numbers.

Windows 11 Client Notification

On September 14th we sent out the following announcement:

Windows® 11 is due to be released in early October, and we are pleased to announce that our compatibility testing phase for CGM webPRACTICE with Windows® 11 is already underway.

To ensure that CGM webPRACTICE's functionality will **not** be negatively impacted while operating on Windows® 11, we anticipate that our comprehensive testing will be completed in early 2022.

To avoid affecting the functionality of CGM webPRACTICE

We advise that you do not install or use Windows® 11 on any workstations used for CGM webPRACTICE until our compatibility testing has been completed.

We are also continuing to work diligently on enhancements to CGM webPRACTICE so that, soon, you will be able to operate the software with either Google Chrome or Microsoft Edge (in addition to Internet Explorer 11).

As always, your satisfaction remains our highest priority, and we will provide additional communication updates in the near future.

We continue to make great progress and the compatibility testing phase remains on track for completion in early 2022. We will provide additional updates soon.

Billing

Print History Statements (*Billing > Print History Statements*) *****Idaho Patient Act Clients Only*****

Enhanced the Idaho Pt Bal Statements (Type 10) so it will print transactions that are older than 1/1/2021, if selected.

Reports

Compile UDS Reports (*Reports > UDS Reports > Compile UDS Reports*) and **Print UDS Reports** (*Reports > UDS Reports > Print UDS Reports*)

Enhancements released for the following UDS Reports to meet the new reporting standards.

- Table 6A - Selected Diagnosis and Services Rendered

Aged A/R by (all sorts) (*Reports > Aged Accounts Receivable (A/R) Reports > Aged A/R by (all sorts)*)

Updated all the Excel versions of these reports, so that all the data will print in individual columns.

Summary Analysis by Responsible Dr (*Reports > Statistical Reports > Summary Analysis Reports > Summary Analysis by Responsible Dr*) *****New Functionality*****

Added the new sorting option '**by Responsible Dr**' to the Summary Analysis reports.

Statistical Denial Reports (*Reports > Insurance Related Reports > Insurance Statistical Reports > Statistical Denial Reports*)

Changed the following report columns:

- Re-named **Carrier** to **Denial Carrier** (Print Here and Excel versions)
- Combined **Last Activity Carrier** and **Last Activity Description** columns to one **Last Activity Carrier and Description** column (Excel version only)

Schedule

Check In/Out Payment Journal (*Schedule > Scheduling Printing Menu > Check In/Out Payment Journal*) *****CGM webPAY™ Clients Only*****

Enhanced both the Print Here and Excel versions of the report to print a message when you collect an unposted CGM webPAY payment, but you do not receive the payment Receipt. After you post the payment, the message will no longer print. An additional change was made for the **Print Here** report, to move the Totals amounts to print beneath the Amount heading instead of the **Different Amt Posted** heading.

System

Patient Collections Integration (*System > Database Maintenance Menu > Integrations > Collections Integrations > Patient Collections Integration*)

Removed the DMS or Word Document field since Word documents have not been supported for many years. Also resolved an issue where 'TME' would default in the **Time** field for the **Automatic Roster Population** option.

Payment Entry Integration (*System > Database Maintenance Menu > Integrations > Transaction Integrations > Payment Entry Integration*) *****Action Required*****

Added an **Exclude Negated Items on Pmt Allocation screen when Filtering** check box, so you can select whether you want those items to display or not on the payment allocation screen. The default for the check box is 'selected'.

Tables

Load ICD-10-CM Codes (*Tables > Diagnosis Code Table > Load ICD-10-CM Codes*) ****Action Required****

The updated ICD-10 code set, effective October 1, 2021-September 30, 2022 is available for loading. This code set is included, so you are **not** required to purchase it.

Maintain Insurance Carriers (*Tables > Insurance Carrier Table > Maintain Insurance Carriers*)

Added an **eMEDIX Website** Action Column button so you can easily access the eMEDIX payer list. This function requires that your user credentials be stored in the *eMEDIX eResp Integration* function. Upon accessing the website for the first time, the main menu will display. Select **Administration**, then **Payer List** and from there you can search for the applicable payer.

Load the HCPCS Codes (*Tables > Procedure Code Table > Load the HCPCS Codes*) *****Action Required*****

Updates to the 2021 HCPCS data files, effective October 1, 2021, are available. To receive the updated codes, you must load the 2021 file.

Import RVU Unit Values (*Tables > Relative Value Schedule Table > Import RVU Unit Values*) ****Action Required****

The Centers for Medicare and Medicaid Services (CMS) have updated the 2021 Medicare Relative Value Unit files (RVUs) effective October 1, 2021. To receive the updated codes, you must load the **2021** file.

Import Fee Schedules (*Tables > Fee Schedule Tables > Import Fee Schedules*) *****Action Required*****

The Centers for Medicare and Medicaid Services (CMS) have released the following Fee Schedules:

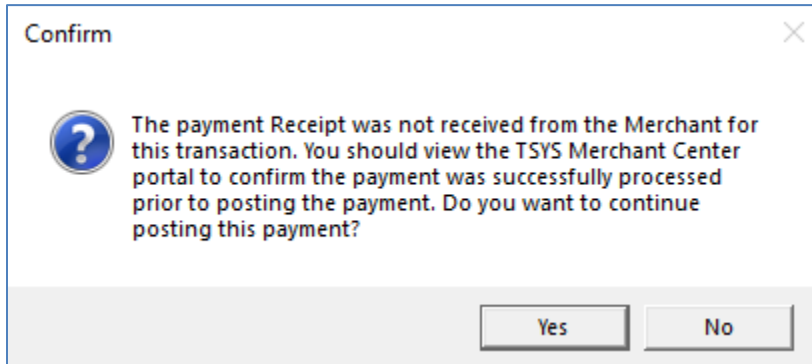
- 2021 Medicare Physician Fee Schedule, effective October 1, 2021
- 2021 Medicare Clinical Laboratory Fee Schedule, effective October 1, 2021
- 2021 Medicare DME Fee Schedules; Prosthetics/Orthotics and Supplies (DMEPOS), effective October 1, 2021

The updated files are available for import by selecting 2021 in the **Fee Schedule Year** list and the applicable file name in the **Fee Schedule File** list.

Transactions

Payment Entry (*Transactions > Payment Entry*) ***CGM webPAY Clients Only***

When you collect an unposted CGM webPAY payment, but you do not receive the payment Receipt, you will now have the option to continue with posting the payment. The following message will display:



Unposted Payments Journal (*Transactions > Transaction Journals > Unposted Payments Journal*)

CGM webPAY Clients Only

Enhanced the report to print a message when you collect an unposted CGM webPAY payment, but you do not receive the payment Receipt.